

GlobalWare: Edit User Views for 3rd Party Software Access

February 16, 2017

THE INFORMATION CONTAINED IN THIS DOCUMENT IS CONFIDENTIAL AND PROPRIETARY TO TRAVELPORT

Copyright

Copyright © 2017 Travelport and/or its subsidiaries. All rights reserved.

Travelport provides this document for information purposes only and does not promise that the information contained in this document is accurate, current, or complete. This document is subject to change without notice. No part of this document may be reproduced, stored in a retrieval system, or transmitted in any form or any means electronic or mechanical, including photocopying and recording for any purpose other than the licensee's personal use without the prior written permission of Travelport and/or its subsidiaries.

Trademark

Travelport and/or its subsidiaries may have registered or unregistered patents or pending patent applications, trademarks copyright, or other intellectual property rights in respect of the subject matter of this document. The furnishing of this document does not confer any right or license to or in respect of these patents, trademarks, copyright, or other intellectual property rights.

All other companies and product names are trademarks or registered trademarks of their respective holders.

Adding the Edit views to a GlobalWare User Login

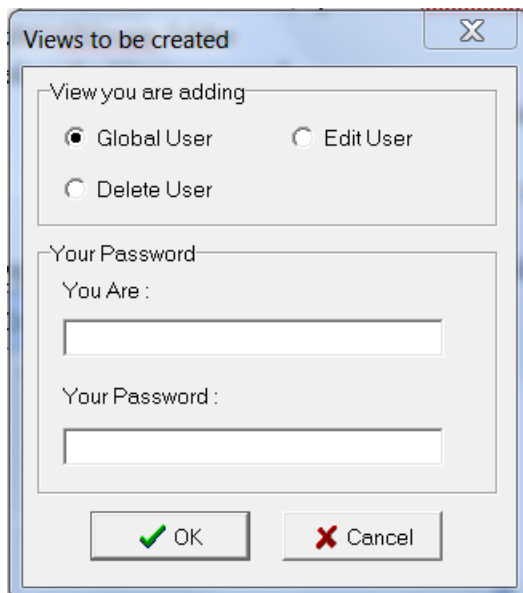
Formerly the users were either 'Global' or 'Edit'. These no longer exist in our new PCI compliant versions. If the user exists in the GlobalWare database already and has created a new password, these are the steps to create a global or edit user to access the data.

If the user does not exist in the GlobalWare database, that must be done first. They must have 'system high' selected on the security tab. Login and password are upper case. The user id must not begin with numeric.

Note: The GlobalWare user that is creating the global or edit user must have "System High" permissions as well.

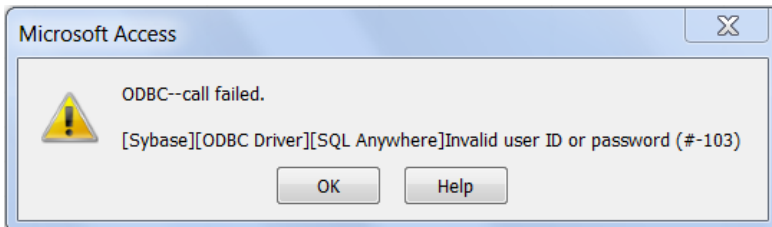
Open GlobalWare and continue. To create a new global or edit user:

1. Open the Program Files (x86)\Gblware folder.
2. Double-click the **EditUserView** utility.
3. Select the appropriate **View** in the **Views to be created** dialog box:
 - **Global User** provides 'Global Views' to the database. Similar to the previous "Global / Ware" login (Global Views are read-only).
 - **Edit User** provides 'Edit Views' to the database. Similar to the previous "Edit / data" login (Edit Views are full-read, limited write).
 - **NOTE: DO NOT SELECT BOTH GLOBAL AND EDIT FOR USE WITH SAME USER ID AND PASSWORD.**
4. Complete the **You Are** (login for user being created) and **Your Password** fields. (password in CAPS)
5. **NOTE – do not use any special characters. i.e. #, *, %, ! – only alpha or numeric.**
6. Click **OK**.



Connecting to the Database via ODBC connection

When connecting to the database via ODBC, ensure use of ALL CAPS for the login and password. If login is attempted with a User ID that has not been given the correct **Views**, the following error message appears:



If a login is attempted a few times and not successful, it may be necessary to pick a completely different userID and password.