

Adding Applications To the Focalpoint® Companions DropDown Menu

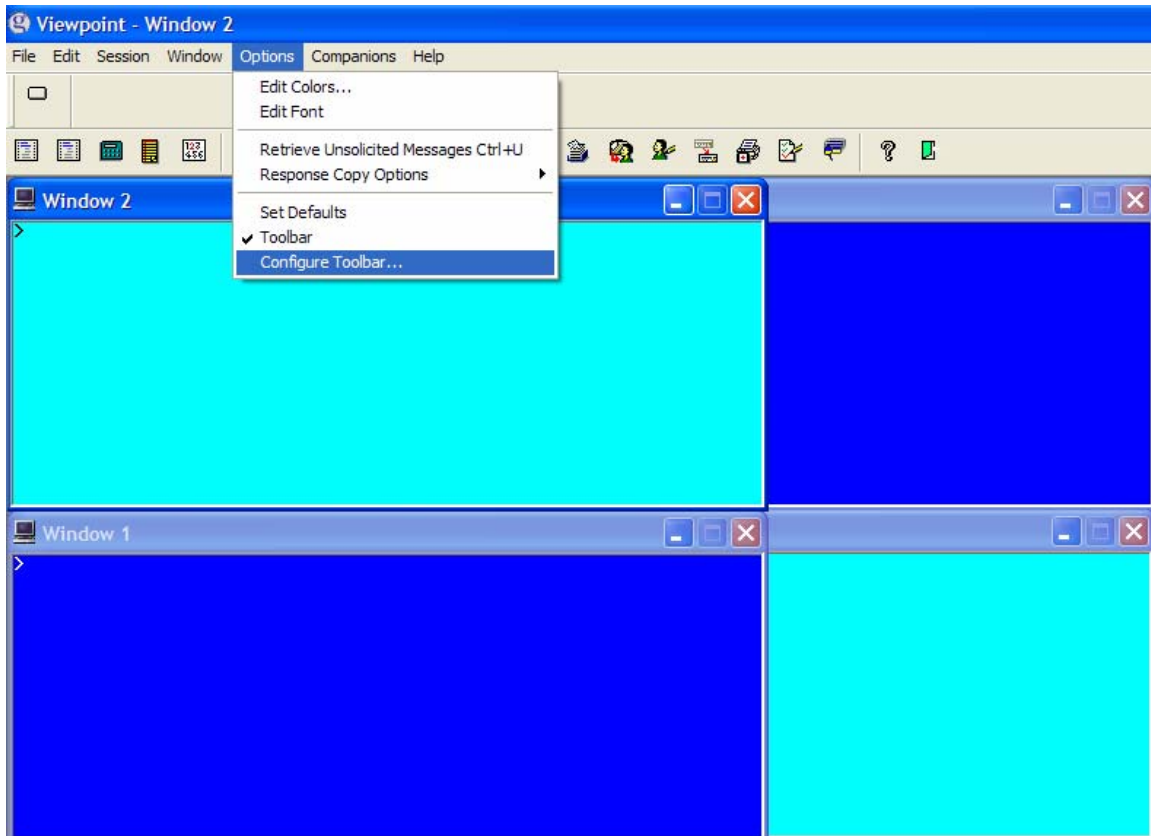
The following document outlines adding references to 3rd Party applications to the Focalpoint® Companions dropdown menu.

Introduction:

Sometimes it will be necessary for you to add a reference or to re-reference an application on the Focalpoint®® Companions drop down menu.

Galileo Desktop 1.01 allows clients to reference any application to Focalpoint®® Companions drop down menu through the use of the configurable toolbar.

1. In the Focalpoint®® Terminal Entry view of Galileo Desktop select **options** drop down menu and then select **configure toolbar**.



2. From The Configure Toolbar dialog box:

2a) Click New Button

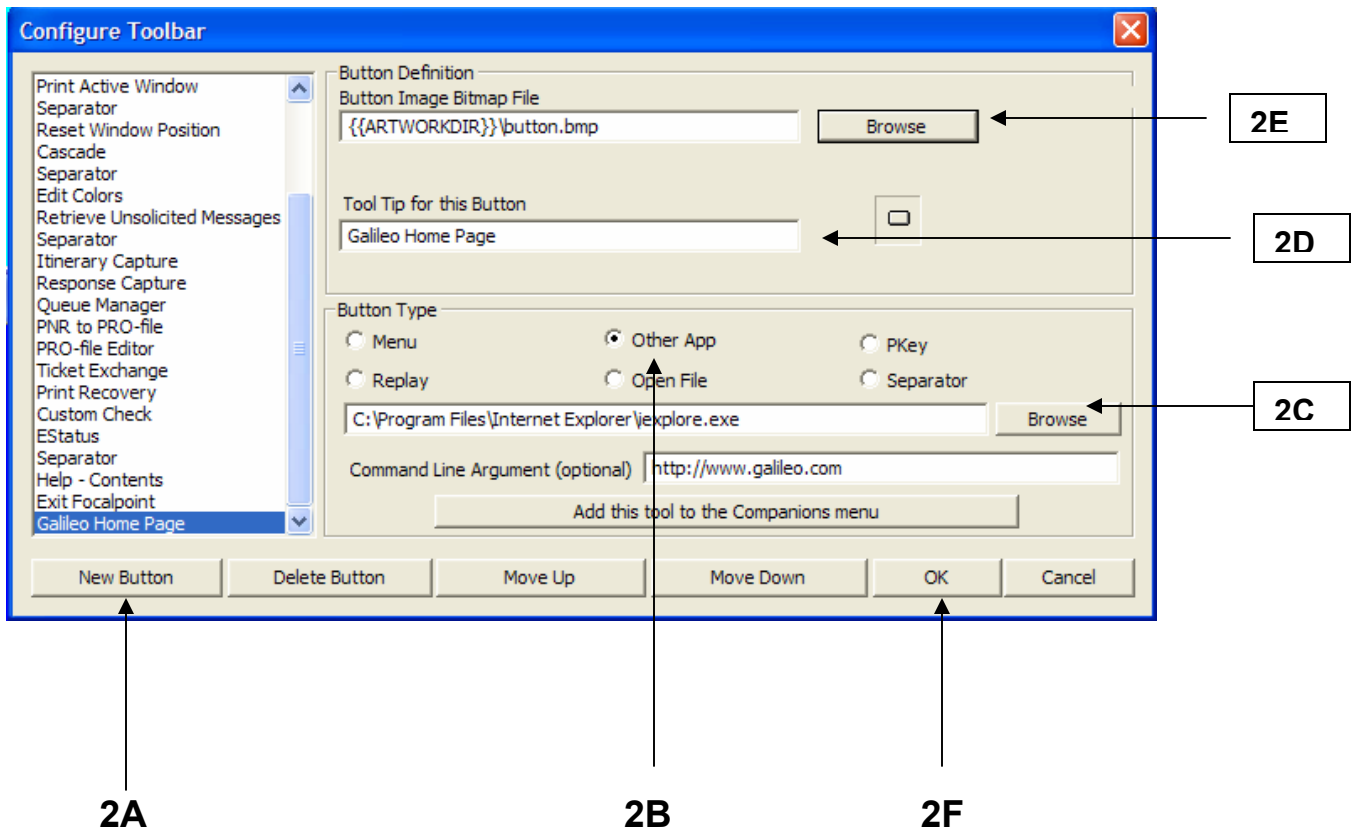
2b) Click the Other App radial button

2c) Click the Browse button located in the button type are of the dialog box and browse the directory for the *.exe file of the application.

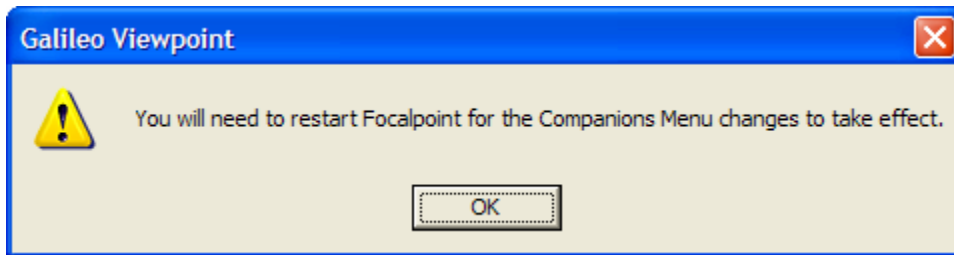
2d) Add the title of the application in the Tool Tip for this Button as you would like it to appear on Focalpoint® Companions drop down menu.

2e) Click the Browse button located beside Button Image Bitmap File and select the *.bmp file you would like to appear on the toolbar.

2f) Click OK.



3. The following dialog box will display: Click OK button.



4. Close and Re-star Galileo Desktop. The application will appear in Focalpoint® Companions drop down menu.

